



18 Polydamas Close, London, E3

BUTLER & STAG



Impressive one bedroom sixth floor apartment located close to fantastic transport links, the amenities of the historic Roman Road and the wonderful Victoria Park.



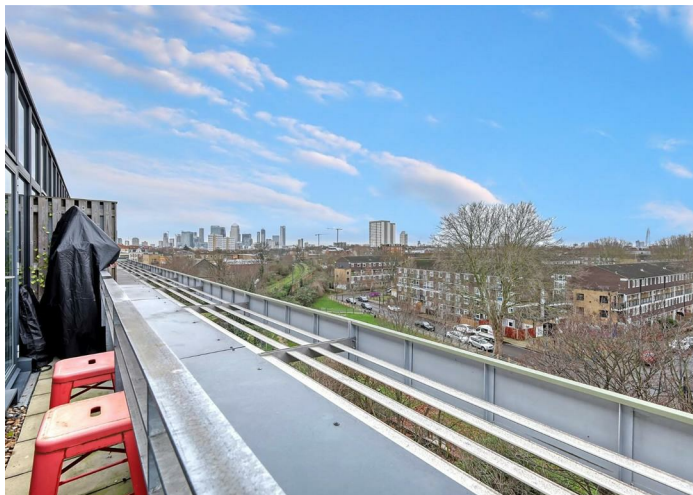
- One Bedroom Apartment
- Sixth Floor
- West-Facing Balcony with City Views
- Open-Plan Kitchen / Living Area
- Spacious Double Bedroom
- Modern Bathroom
- Communal Roof Terrace
- Part Furnished

Offered to the lettings market for the first time having been owner-occupied, this excellent apartment features an open-plan modern fitted kitchen / living area with access to a west-facing private balcony with views over the city.

Further comprising of a spacious double bedroom, modern bathroom and hallway storage, this property is offered part furnished and available from 24th January.

Diagoras House is a well maintained development set off Fairfield Road, which provides easy access to Bow Church DLR station and the underground stations of Bow Road and Mile End. The historic Roman Road is also nearby, offering a plethora of amenities and just beyond that, is the award-winning Victoria Park.

EPC Rating C
Council Tax Band C

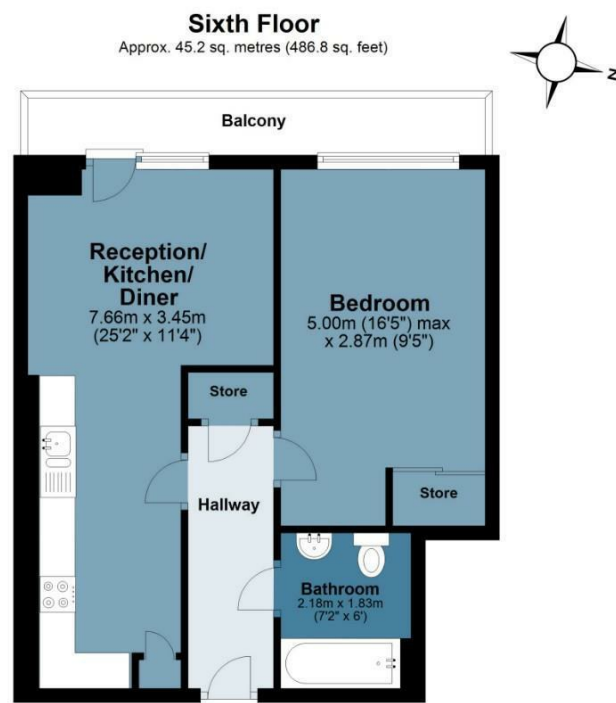




Diagoras House

Approx. Gross Internal Area 45.2 Sq M (486.8Sq Ft)

BUTLER & STAG



Measurements are approximate and for illustration purposes only. While we do not doubt the accuracy and completeness, we advise you conduct a careful independent assessment of the property to determine monetary value.
© @modephoto.uk www.modephoto.co.uk

IMPORTANT NOTICE - These particulars have been prepared in good faith and they are not intended to constitute part of an offer or contract. We have not performed a structural survey on this property and the services, appliances and specific fittings have not been tested. All photographs, measurements, floor plans and distances referred to are given as a guide and should not be relied upon.

BUTLER & STAG

☎ 020 8102 1236

🏠 508 Roman Road, Bow, London, E3 5LU

✉ bow@butlerandstag.com

www.butlerandstag.uk